

**Auer**

devient

 **intuis**

MORE COMFORT, LESS ENERGY.



OUR HTi<sup>70</sup>  
HEAT PUMPS



BVCGP 6000118

\*Only for HTi<sup>70</sup> 6 single-phase & 8kW single-phase and three-phase, with Premium+ and DS170 D controls.

# OUR HTi<sup>70</sup> HEAT PUMPS AND CONTROLS

The HTi<sup>70</sup> range is renowned for its Inverter technology, which allows a vast power adaptation range from 15% to 100%. The ability to respond to the desired level of comfort, depending on external conditions. This generates efficiency and ensures savings.

High temperatures (up to 70 °C) are possible thanks to R290. This refrigerant can be used to provide 100% thermodynamic heating and domestic hot water for renovation projects. Remarkable performance levels that improve even further when water levels are lower, as with new-build projects.

<b>Technology</b>		
<b>Maximum water outlet temperature (excluding back-up)</b>		
<b>Refrigerant</b>		
<b>Maximum heat pump capacity</b>		
<b>Type of back-up/Power</b>		
<b>Configuration</b>	<b>Heating</b>	1 circuit
		2 circuits
	<b>DHW</b>	Integrated
		Remote <sup>(1)</sup>
<b>Energy class up to</b>		35 °C/55 °C
		DHW
<b>Seasonal performance coefficient up to</b>		35 °C/55 °C
<b>Seasonal energy efficiency/ SEER (η<sub>s</sub>) up to</b>		35 °C/55 °C
<b>Description Application</b>	<b>New</b>	Individual
		Collective
	<b>Renovation</b>	Individual
		Collective
<b>Radiators</b>		Underfloor/Ceiling
		Radiators

HTi <sup>70</sup> Range			HYBRID Range
ORIUM CONTROL UNIT	PREMIUM+ CONTROL UNIT	DS170 D CONTROL UNIT	GAS HYBRID CONTROL UNIT
Variable-power individual unit			Variable-power individual unit
70 °C			70 °C
R290			R290
Single-phase: 6kW Single-phase/Three-phase: 8kW	Single-phase: 6kW Single-phase / Three-phase: 8/11/14kW	Single-phase: 6kW Single-phase / Three-phase: 8/11/14kW	Single-phase: 6kW Single-phase / Three-phase: 8/11/14kW
Electric 6kW single-phase/ three-phase	Electric 6kW single/three- phase or boiler (not included).	Electric 6kW single-phase/ three-phase	Integrated gas condensing boiler
✓	✓	✓	✓
Optional	Can be integrated	Optional	Optional <sup>(1)</sup>
-	-	170L	-
✓	✓	-	✓
A+++ / A+++ <sup>(2)</sup>	A+++ / A+++ <sup>(3)</sup>	A+++ / A+++ <sup>(3)</sup>	A+++ / A+++ <sup>(3)</sup>
-	-	A+	-
4,8 <sup>(4)</sup> / 3,9 <sup>(4)</sup>	4,8 <sup>(4)</sup> / 3,9 <sup>(4)</sup>	4,8 <sup>(4)</sup> / 3,9 <sup>(4)</sup>	4,8 <sup>(4)</sup> / 3,9 <sup>(4)</sup>
190% / 154% <sup>(5)</sup>	190% / 154% <sup>(5)</sup>	190% / 154% <sup>(5)</sup>	192% / 155% <sup>(4)</sup>
✓	✓	✓	✓
-	-	-	-
✓	✓	✓	✓
-	-	-	-
✓	✓	✓	✓
✓	✓	✓	✓

(1) See catalogue (2) With HTi<sup>70</sup> 8kW three-phase (3) With HTi<sup>70</sup> 8kW single-phase and three-phase (4) With HTi<sup>70</sup> 8kW single-phase

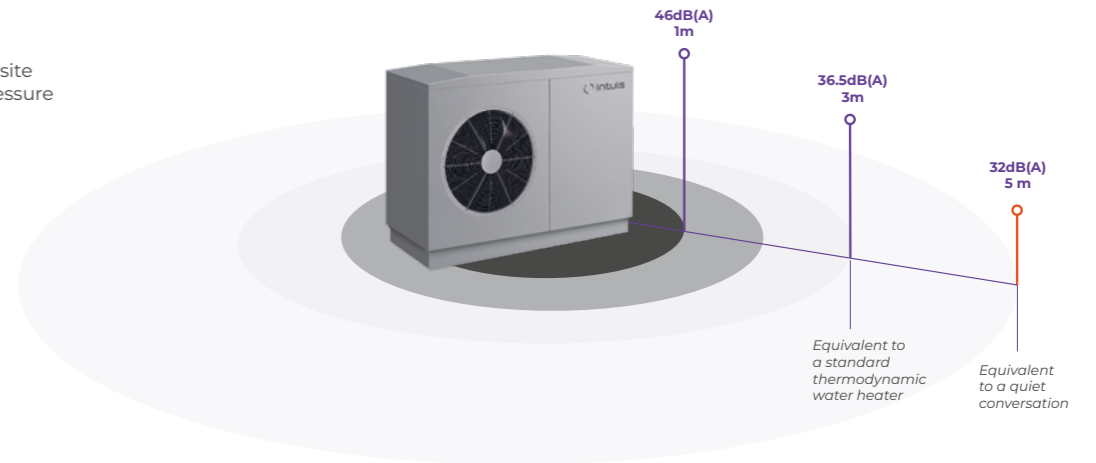
# PRESENTATION OF OUR HTi<sup>70</sup> HEAT PUMPS

High-temperature 70 °C intuis heat pumps with highly adaptative power.



## Noise output of 6kW outdoor unit

The diagrams opposite show the sound pressure at 5 m +7 °C/45 °C  
Directionality 4 measures.



Advantages for business customers

### Design

- The single-unit design allows easy installation, with a simple hydraulic link between the heat pump and control unit, so there's no need to handle any fluids.
- All components are quickly accessible to facilitate maintenance.
- Delivery includes a full kit with heat pump, control unit, hydraulic connection kit with filter and sensor, and a buffer tank where necessary.

### Use

- The Premium+ model can also use the existing boiler as a back-up in a hybrid system.

### Performance

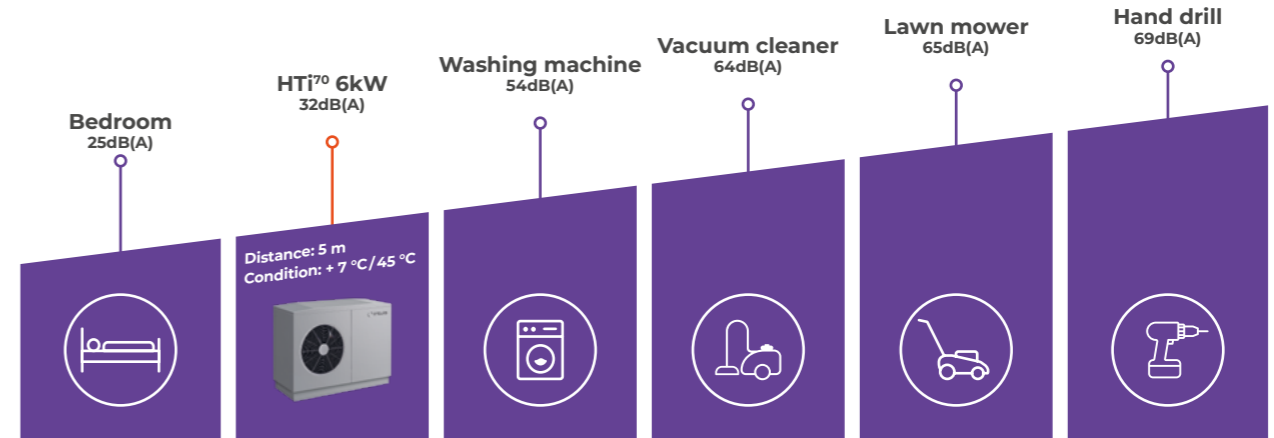
- High temperatures up to 70 °C thanks to R290 refrigerant, providing heating in all configurations and anti-legionella cycles without back-up for DHW production.

### Comfort & durability

- The solid construction with anti-rust and UV-protected steel panel structure, fully stainless steel heat exchanger, anti-rust-treated evaporator ensure a longer lasting product.

### Savings

- Operates with or without back-up (gas, electricity, etc.) depending on the installation configuration.



Benefits for your customers

### Design

- Our heat pumps are designed and manufactured in France at our Feuquières-en-Vimeu factory, and the majority are Origine France Garantie certified<sup>(1)</sup>.
- Heating, cooling, and domestic hot water requirements can be covered according to the control unit chosen.
- The main parts are guaranteed for 5 years (compressor, tank, electrical equipment)<sup>(2)</sup>.

### Use

- Our heat pumps are designed for detached homes, recent builds, new RE2020 builds, and renovation projects.
- They are perfect for underfloor/ceiling heating/cooling, low-temperature, fan coil or high-temperature radiator projects.

### Performance

- The Inverter compressor allows for highly adaptive power, from 15 to 100%, to adjust

power according to requirements and outdoor conditions

- Our heat pumps run on thermodynamic power down to a -20 °C outside air temperature.

### Comfort & durability

- Their meticulous design ensures very low noise emission (see diagram p.5).

### Environment

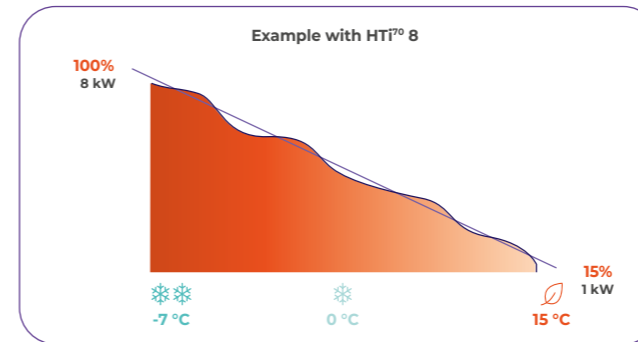
- The R290 used in our heat pumps is a non-fluorinated gas low environmental impact (GWP=3).

### Savings

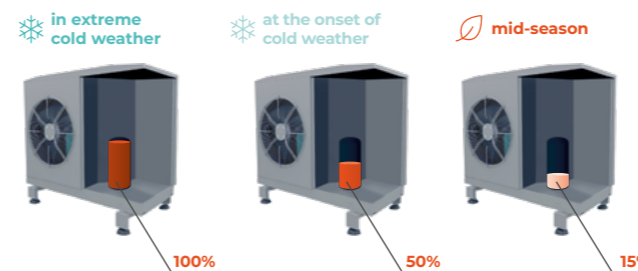
- Our heat pumps are eligible for state aids and the EDF bonus.
- The high performance coefficient allows a reduction in meter subscription costs.

(1) Only for HTi70 6 single-phase & 8kW single- & three-phases with Premium+ and DSI70 D control units.  
(2) Compressor guaranteed for 5 years subject to compliance with the warranty conditions set out in the T&Cs of the current price list.

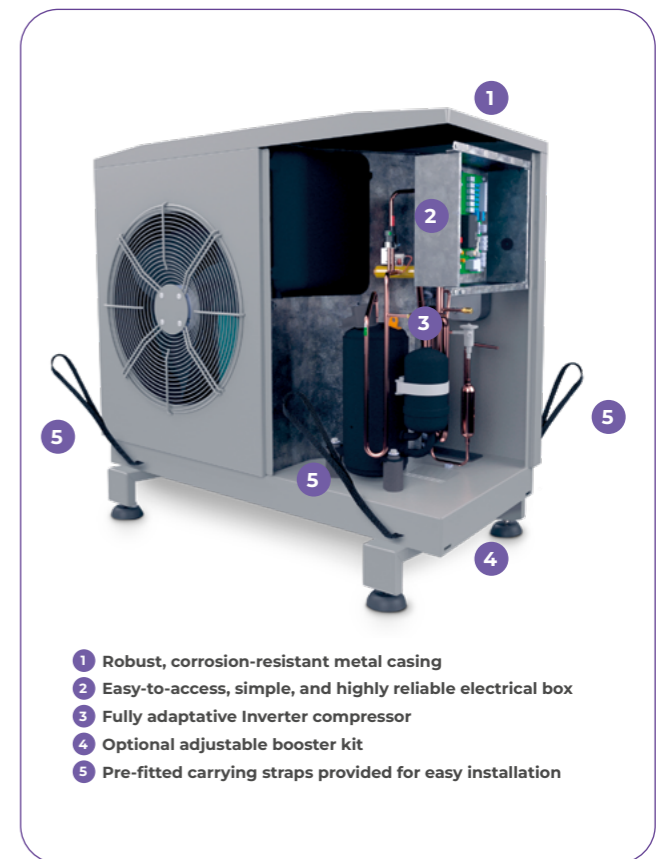
## Presentation of Inverter technology



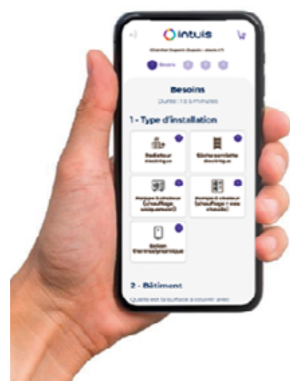
- Mid-season, the HTi<sup>70</sup> adjusts its power and temperature to optimum levels.
- In the middle of winter, the HTi<sup>70</sup> delivers full power at a high temperature to ensure comfort.



The HTi<sup>70</sup> has an Inverter compressor that adapts its power from 15 to 100%.



## TIPS FOR EFFICIENT INSTALLATION



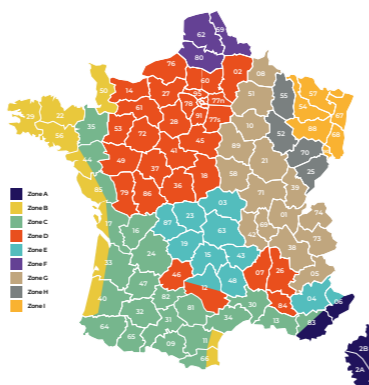
Use our DimoPAC tool dedicated to detached home projects to choose the most suitable heat pump model for your project. It's a practical tool that will help you assess heat loss and offer you a selection of suitable solutions, in line with QualiPAC requirements and state financial aids. It can be downloaded from the business section of our website and will soon be available online via a specialised app.

**Warning:** this tool is only an indicator; accuracy depends on the quality of the information entered. If you require greater precision, please use a qualified design office.

What questions do you need to ask to be as precise and thorough as possible when preparing your project?

### 1. Project location

To establish the reference temperature, location, altitude, and distance from the sea are decisive indicators. Your design will be defined according to these factors as well as the building's heat loss information.



### 2. Installation

Equipment installation conditions, available space, state of the floor and walls, condensate drainage, visual and acoustic impact, performance linked to the distance between the indoor and outdoor units, etc. There are many points to take into account to ensure a good setup.

### 3. Electricity

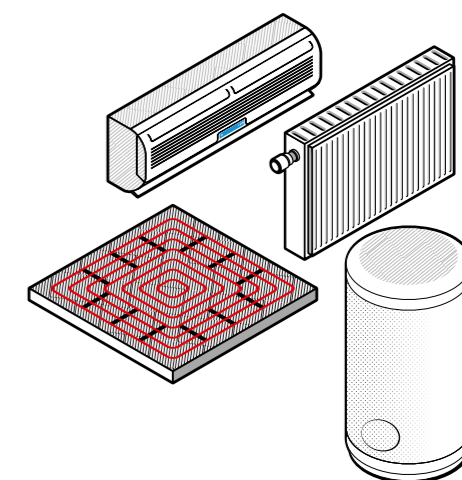
Correctly calibrating your electrical installation is the key to success. It's a step that definitely shouldn't be overlooked! You should take into account the wattage of the meter, the presence of a circuit breaker, the current (single-phase or three-phase), the need to add an electrical panel, and voltage variations or micro-cuts in the network and cable cross-sections.

### 4. The type of project

What does this mean? The use of a heat pump. Are you replacing an existing boiler or a heat pump? What was your previous consumption level? Is there a fireplace or woodburner? All this information will guide the design of your installation.

### 5. The heating conditions

Type (radiator, underfloor, ceiling, fan coil), water flow rates and DHW requirements if necessary.



### 6. Miscellaneous points

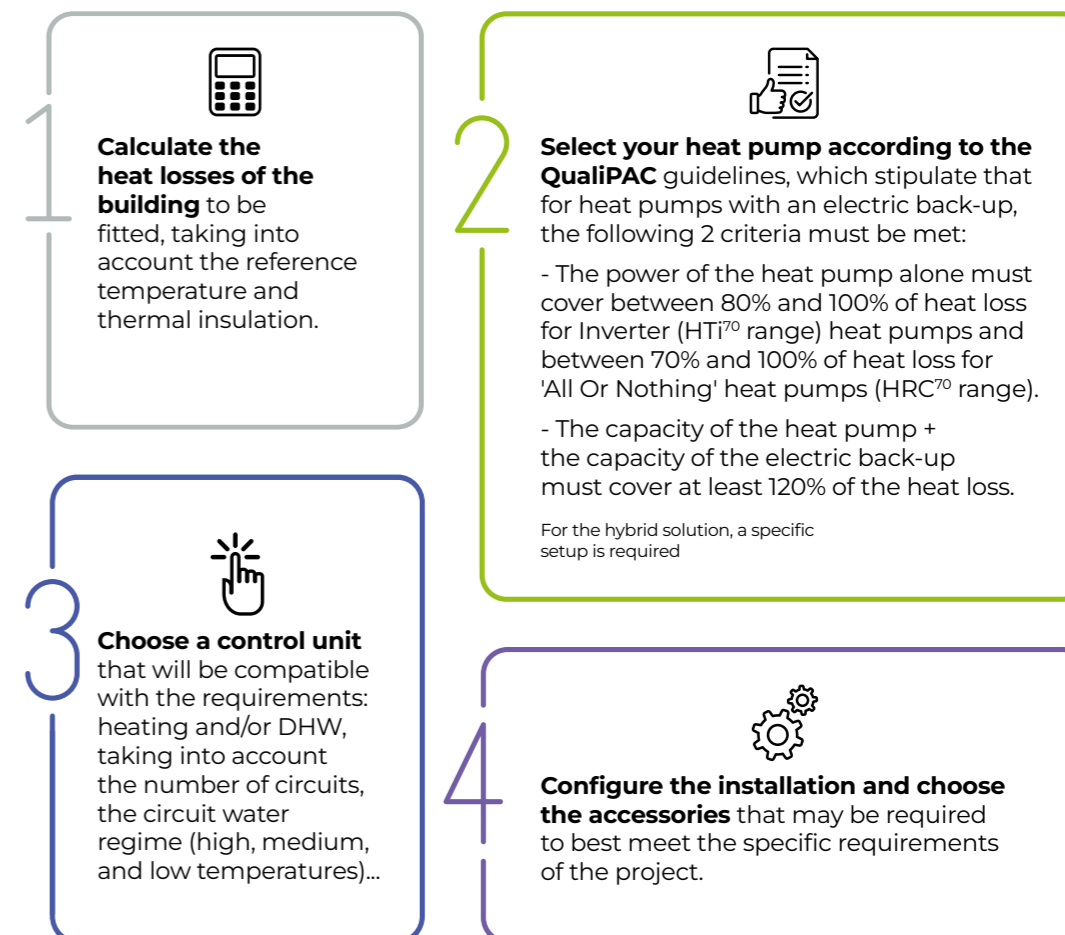
To avoid any issues after the job has been completed, you'll need to ensure an open dialogue with your customer. What is the objective? Find out what their habits are and how they use their heating and DHW system.

All these aspects contribute to overall satisfaction, user comfort, and efficient energy consumption. System design is crucial.

With these elements in hand, what's the next step?

## DESIGN

The design stage is crucial when preparing a project



# UNDERSTANDING THE DIFFERENT CONTROL UNITS

## Compatibility of individual residential control units and HTi70 heat pumps.

Control units		Control unit features	Control unit plus points	HTi70 6kW / HTi70 8kW	HTi70 11kW / HTi70 14kW
		Excluding the Thorix hydraulic module, which allows more circuits to be covered	Integrated separator kit Hydraulic connection kit included		
Orlum		<b>Standard equipment:</b> 1-circuit heating & remote DHW <b>Optional kit:</b> Cooling	<b>Intended use:</b> new/recent houses and simple installations 6kW stepped back-up Ideal for floor/ceiling Optional cooling function (kit)	6kW SEER 35/55: 187%/133% 8kW SEER 35/55: 190%/154%	X
Premium+		<b>Standard equipment:</b> 1-circuit heating & boiler connection <b>Optional kit:</b> 2-circuit heating & boiler connection Or 1-circuit heating & remote DHW & boiler connection	<b>Intended use:</b> renovations and complex installations <b>Integrated 38L buffer tank</b> <b>Connection to existing boiler</b> for back-up. Stepped 6kW back-up, compliant with norms Optional kit for 2 <sup>nd</sup> circuit	6kW SEER 35/55: 187%/133% 8kW SEER 35/55: 190%/154%	11kW SEER 35/55: 186%/144% 14kW SEER 35/55: 175%/143%
DS170 D		<b>Standard equipment:</b> 1-circuit heating & integrated DHW	<b>Intended use:</b> new homes or renovation projects Onix 40L buffer tank for 11 & 14kW power ratings Stepped 6kW back-up, compliant with norms 170 L DHW tank (integrated in the control unit)	6kW SEER 35/55: 187%/133% 8kW SEER 35/55: 190%/154%	11kW SEER 35/55: 186%/144% 14kW SEER 35/55: 175%/143%
Gas Hybrid		<b>Standard equipment:</b> 1-circuit heating & remote DHW	<b>Intended use:</b> renovation projects Integrated 18kW gas boiler. High temperature - 80 °C Adaptative gas condensing booster Smart system with 3 operating modes (heat pump only, hybrid, boiler only)	6kW SEER 35/55: 190%/137% 8kW SEER 35/55: 192%/155%	11kW SEER 35/55: 186%/144% 14kW SEER 35/55: 177%/144%

# REMINDER OF THE STEPS TO FOLLOW DURING A WORKSITE

You've studied the feasibility of the project, identified the right equipment, and created a dimension sheet using the DimoPAC tool. Here are a few more steps...



## 1 - Applying for financial aid<sup>(1)</sup>

If you want your customers to benefit from financial aid, there are a number of schemes available depending on their income. Options available in France include MaPrimeRénov, 'heating boost', CEEs, the 0% eco-loan, 5.5% VAT, anti-energy-waste bonus, etc. However, not all forms of assistance can be combined, so you'll need to carry out a simulation. To do so, head over to [france-renov.gouv.fr/aides/simulation/](https://france-renov.gouv.fr/aides/simulation/)



## 2 - Proceed with installation

The next step is installation. Don't forget that the quality of the hydraulic system is paramount. Desludging and treatment are effective solutions that protect the system and improve its performance. Other basic rules need to be followed, such as the correct positioning of filters, inclusion of a sludge trap, a tapping point, a correctly sized expansion tank, air valves at high points, etc. Bleeding the circuit is a key stage in installation, but long-term maintenance is essential.



Watch a video showing an example of a renovation project.



## 3 - Send off the warranty certificates

Once the installation has been completed, it is essential to return the warranty certificates for the equipment installed. This enables you to activate the guarantee on the date of installation and, if you've subscribed, to take advantage of our loyalty programme<sup>(2)</sup>.



## 4 - Start up

You can now start up the equipment and proceed to Setup. If you use a brand-approved Service Centre, you'll benefit from an additional 5-year warranty extension on all parts and labour for the first year. This extension is guaranteed by the conformity approved by our departments and by compliance with the maintenance protocol for our products. All documents must be returned to the intuis technical department. As part of the maintenance and care process, the manuals and maintenance guides will help you to operate in the best possible conditions to ensure optimum user comfort.

(1) For mainland France only. (2) The loyalty programme applies to mainland France only.

# ORIUM HTi70

Compact, multifunctional, and triple service for all-season comfort.



Advantages for business customers



### Design

- The cooling kit is available as an option (back plate + condensate drain bin ref.754602).
- No refrigerant handling required thanks to a simple hydraulic link between the heat pump and the control unit (the full kit includes pump + control unit + hydraulic link with filters and 2 hoses).



### Performance

- High temperatures up to 70 °C thanks to R290 refrigerant, providing heating in all configurations and anti-legionella cycles without back-up for DHW production.



### Comfort & durability

- Its flexibility means it can cover several circuits (requires accessories, notably the Thorix).
- Integrated single- or three-phase 6kW electric back-up (2, 4, and 6kW).



### Savings

- Operates with or without back-up (gas, electricity, etc.) depending on the installation.

Benefits for your customers



### Design

- The compact, comprehensive control unit meets all needs: heating, cooling (available at the end of 2023) and remote DHW.



### Usage

- Orium is ideal for new-build projects with low-temperature heating (underfloor or ceiling heating) or high-temperature radiators for renovations.



### Performance

- The Inverter compressor allows for highly adaptive power, from 15 to 100%, to adjust power according to requirements and outdoor conditions.
- Our heat pumps run on thermodynamic power down to a -20 °C outside air temperature.



### Comfort & reliability

- Smart remote management (optional).
- Their meticulous design ensures very low noise emission (see diagram p.5).



### Environment

- The R290 used in our heat pumps is a non-fluorinated gas low environmental impact (GWP=3).

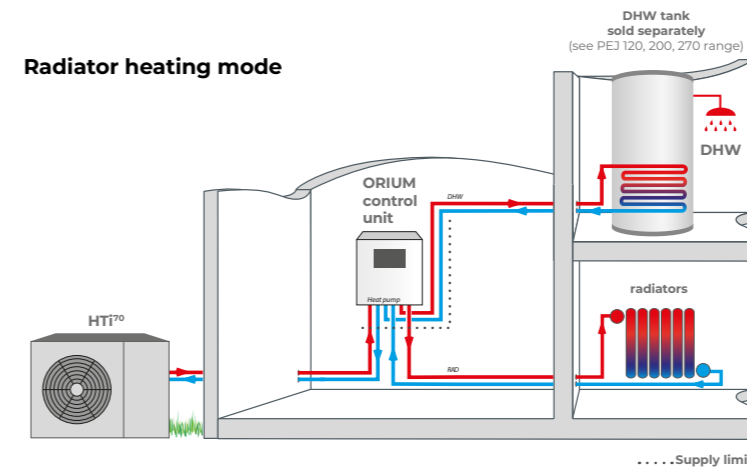


### Savings

- Eligible for financial assistance/EDF grant.
- The high performance coefficient allows a reduction in meter subscription costs.

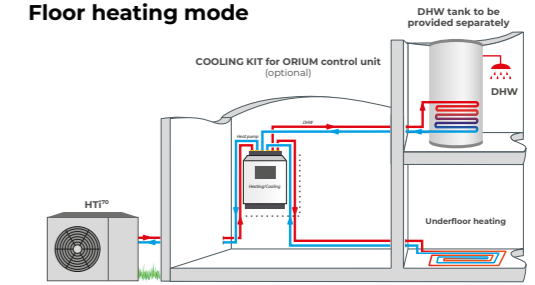
## Schematic diagram (1): HTi70 ORIUM

### Radiator heating mode

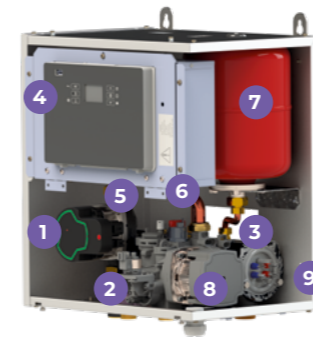
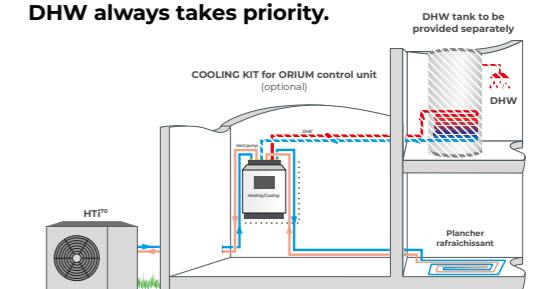


(1) Refer to instructions for connection layout.

### Floor heating mode



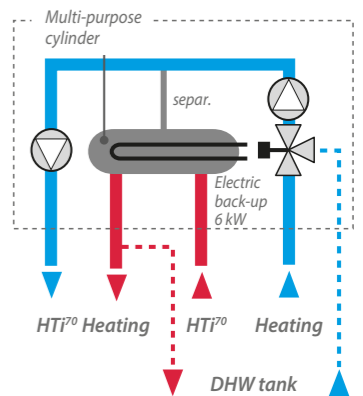
### Floor cooling mode. DHW always takes priority.



### Diagram of ORIUM control unit

- 1 Heat pump circulator
- 2 3-way heating/DHW valve
- 3 20-year warranty on cast-iron unit
- 4 Control panel
- 5 Automatic air vent
- 6 Valve
- 7 5L expansion tank
- 8 DHW/Heating circulator
- 9 Stepped 6kW electric back-up

### Hydraulic diagram



## HTi70 6, 8kW heat pump systems

Product name	Energy class & SEER 35° C/55 °C	Heating capacity Maximum at -7° C/65 °C	Item
HTi70 6kW single-phase Orium	A+++ / A++ 187%/133%	5,5	155009
HTi70 8kW single-phase Orium	A+++ / A++ 190%/154%	6,85	155019
HTi70 8kW three-phase Orium	A+++ / A+++ 190%/154%	6,85	155059
Accessories	Cooling kit for Orium Control unit (optional)		754602

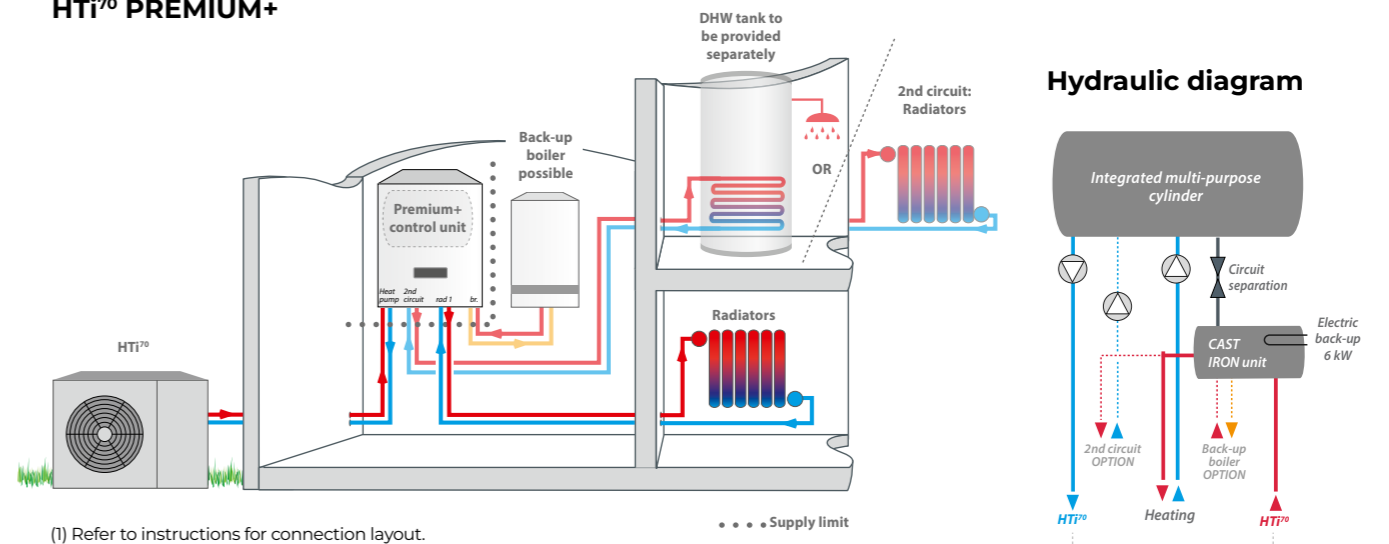
NB: Sets come with an exterior sensor as standard. This allows an extra 2% on your SEER.

# HTi<sup>70</sup> PREMIUM+

Ideal for renovation projects with numerous hydraulic connection options.



## Schematic diagram <sup>(1)</sup>: HTi<sup>70</sup> PREMIUM+



(1) Refer to instructions for connection layout.

Advantages for business customers

### Design

- No refrigerant handling is required thanks to a simple hydraulic link between the heat pump and the control unit. The full kit includes the heat pump, control unit, hydraulic link with filters and 2 hoses, the outdoor sensor, and the 10 m bus cable fitted directly to the heat pump.

### Performance

- High temperatures (up to 70 °C) providing heating in all configurations and anti-legionella cycles without back-up for DHW production.

- Wide power range: HTi<sup>70</sup> 6kW single-phase, HTi<sup>70</sup> 8, 11, 14kW single- or three-phase; can be adapted to different configurations.

### Comfort & durability

- Its flexibility allows it to cover several circuits. What's more, it can be adapted using a second circuit kit.
- Integrated single- or three-phase 6kW electric back-up (2, 4, and 6kW).

### Savings

- Operates with or without back-up (gas, electricity, etc.) depending on the installation configuration.

Benefits for your customers

### Design

- Origine France Garantie certified control unit<sup>(1)</sup>: French know-how at factories located within France.
- The Premium+ control unit covers all heating and remote DHW requirements.
- Independent circuits allow for an extended service life.

### Usage

- Ideal control unit for older detached homes as well as renovation projects.
- Premium+ can be used to replace or accompany an old boiler and does not require the replacement of existing high-temperature radiators.

### Performance

- The Inverter compressor allows for highly adaptive power, from 15 to 100%, to adjust power according to requirements and outdoor conditions.

- Thermodynamic running down to a -20 °C outside air temperature.

### Comfort & reliability

- Smart remote management (optional).
- Their meticulous design ensures very low noise emission (see diagram p.5).

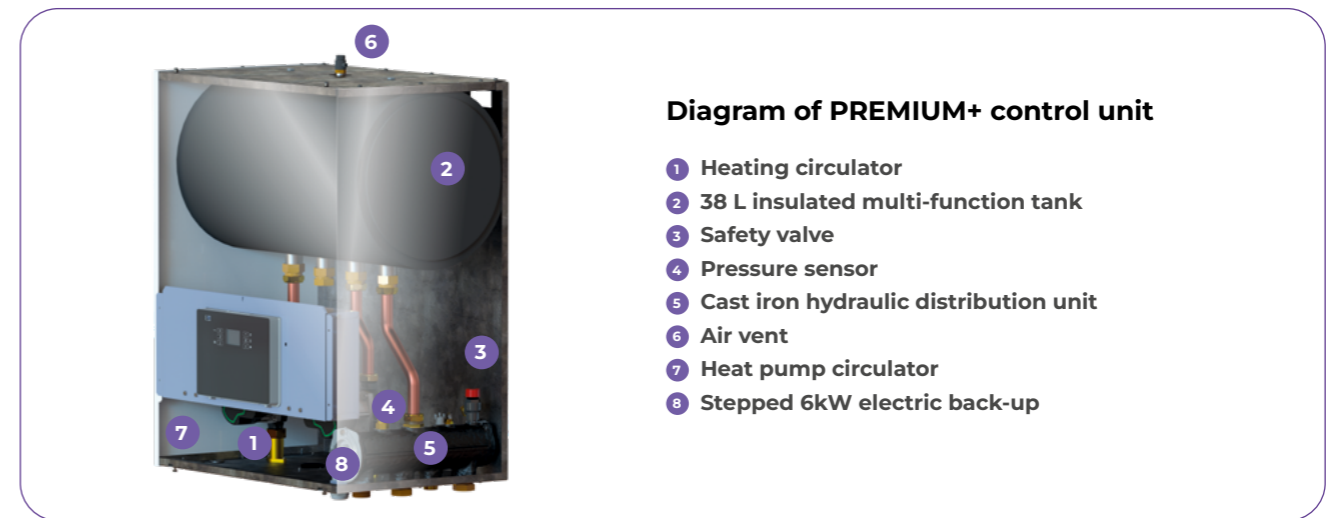
### Environment

- The R290 used in our heat pumps is a non-fluorinated gas low environmental impact (GWP=3).

### Savings

- Eligible for financial assistance/EDF grant.
- The high performance coefficient allows a reduction in meter subscription costs.

(1) Only for HTi<sup>70</sup> 6 single-phase & 8kW single-phase and three-phase, with Premium+ and DS170 D control units.



### Diagram of PREMIUM+ control unit

- 1 Heating circulator
- 2 38 L insulated multi-function tank
- 3 Safety valve
- 4 Pressure sensor
- 5 Cast iron hydraulic distribution unit
- 6 Air vent
- 7 Heat pump circulator
- 8 Stepped 6kW electric back-up

## HTi<sup>70</sup> 6, 8, 11, and 14kW heat pump systems

Product name	Energy class & SEER 35° C/55 °C	Heating capacity Maximum at -7° C/65 °C	Item
HTi <sup>70</sup> 6kW single-phase Premium+	A <sup>+++</sup> /A <sup>++</sup> 187%/133%	5,5	155006
HTi <sup>70</sup> 8kW single-phase Premium+	A <sup>+++</sup> /A <sup>+++</sup> 190%/154%	6,85	155016
HTi <sup>70</sup> 8kW three-phase Premium+	A <sup>+++</sup> /A <sup>+++</sup> 190%/154%	6,85	155056
HTi <sup>70</sup> 11kW single-phase Premium+	A <sup>+++</sup> /A <sup>++</sup> 186%/144%	11	155026
HTi <sup>70</sup> 11kW three-phase Premium+	A <sup>+++</sup> /A <sup>++</sup> 185%/144%	11	155066
HTi <sup>70</sup> 14kW single-phase Premium+	A <sup>+++</sup> /A <sup>++</sup> 175%/143%	13	155036
HTi <sup>70</sup> 14kW three-phase Premium+	A <sup>+++</sup> /A <sup>++</sup> 175%/143%	13	155076

NB: Sets come with an exterior sensor as standard - this allows an extra 2% on the SEER.

# HTi<sup>70</sup> DS170 D

All-in-1 heating and DHW integrated into the unit for compactness, practicality and style.



Advantages for business customers

### Design

- DS170 D is an autonomous, compact, and comprehensive hydro-electronic control unit boasting easy installation and optimised running.
- No refrigerant handling required thanks to a simple hydraulic link between the heat pump and the control unit (the full kit includes pump + control unit + hydraulic link with filters and 2 hoses).

### Performance

- High temperatures (up to 70 °C) providing heating in all configurations and anti-legionella cycles without back-up for DHW production.

- Wide power range: HTi<sup>70</sup> 6kW single-phase, HTi<sup>70</sup> 8, 11, 14kW single- or three-phase; can be adapted to different configurations.

### Comfort & durability

- Its flexibility allows it to cover several circuits.
- Integrated 170 L DHW tank.
- Integrated single- or three-phase 6kW electric back-up (2, 4, and 6kW).

### Savings

- Operates with or without back-up (gas, electricity, etc.) depending on the installation configuration.

Benefits for your customers

### Design

- Origine France Garantie certified control unit <sup>(1)</sup>: French know how at factories located within France.
- The DS170 D control unit covers all integrated heating and DHW requirements.
- Independent circuits allow for an extended service life.

### Usage

- DS170 D is perfectly suited to RE2020 new-build projects with low-temperature heating (underfloor or ceiling heating, low-temperature radiators) or high-temperature radiators for renovations.
- Can be used to replace an old boiler and does not require the replacement of existing high-temperature radiators.

### Performance

- The Inverter compressor allows for highly adaptive power, from 15 to 100%, to adjust power according

- to requirements and outdoor conditions.
- Thermodynamic running down to a -20 °C outside air temperature.

### Comfort & reliability

- Smart remote management (optional).
- Their meticulous design ensures very low noise emission (see diagram p.5).

### Environment

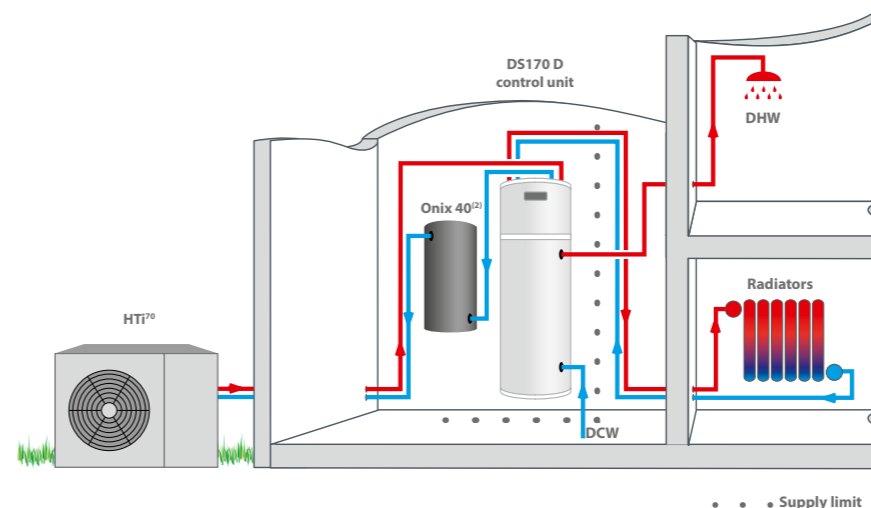
- The R290 used in our heat pumps is a non-fluorinated gas low environmental impact (GWP=3).

### Savings

- Eligible for financial assistance/EDF grant.
- The high performance coefficient allows a reduction in meter subscription costs.

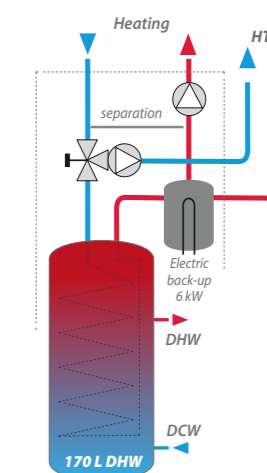
<sup>(1)</sup> Only for HTi<sup>70</sup> 6 single-phase & 8kW single-phase and three-phase, with Premium+ and DS170 D control units.

Schematic diagram <sup>(1)</sup>:  
HTi<sup>70</sup> DS170 D



<sup>(1)</sup> Refer to instructions for connection layout.  
<sup>(2)</sup> Buffer tank for HTi<sup>70</sup> 11 and 14 kW only.

Hydraulic diagram



#### Diagram for DS170 D control unit

- 1 Heating circulator
- 2 3-way heating/DHW valve
- 3 Separator
- 4 20-year warranty on cast-iron unit
- 5 Control panel
- 6 Enamelled steel 170 L DHW tank
- 7 Automatic air vent
- 8 8L expansion tank
- 9 Heat pump/DHW circulator
- 10 Stepped 6kW electric back-up
- 11 DHW

### HTi<sup>70</sup> 6, 8, 11, and 14kW heat pump systems

Product name	Energy class & SEER 35° C/55 °C	Heating capacity Maximum at -7° C/65 °C	Item
HTi <sup>70</sup> 6kW single-phase DS170 D	A <sup>+++</sup> /A <sup>**</sup> 187%/133%	5,5	155004
HTi <sup>70</sup> 8kW single-phase DS170 D	A <sup>+++</sup> /A <sup>+++</sup> 190%/154%	6,85	155014
HTi <sup>70</sup> 8kW three-phase DS170 D	A <sup>+++</sup> /A <sup>+++</sup> 190%/154%	6,85	155054
HTi <sup>70</sup> 11kW single-phase DS170 D/40	A <sup>+++</sup> /A <sup>**</sup> 186%/144%	11	155024
HTi <sup>70</sup> 11kW three-phase DS170 D/40	A <sup>+++</sup> /A <sup>**</sup> 185%/144%	11	155064
HTi <sup>70</sup> 14kW single-phase DS170 D / 40	A <sup>+++</sup> /A <sup>**</sup> 175%/143%	13	155034
HTi <sup>70</sup> 14kW three-phase DS170 D / 40	A <sup>+++</sup> /A <sup>**</sup> 175%/143%	13	155074

NB: sets are supplied with an exterior sensor as standard. This allows an extra 2% on your SEER.

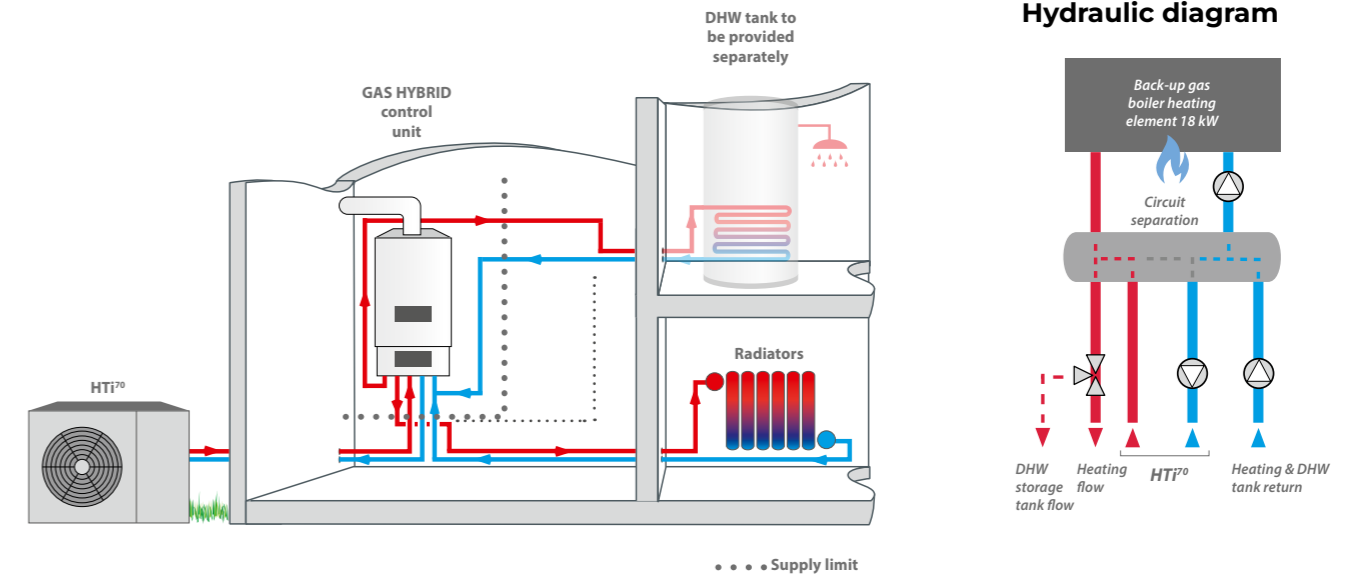


# HTi<sup>70</sup> GAS HYBRID

Combines thermodynamics with a gas condensing back-up incorporated into the control unit; perfect for extreme temperatures.



Schematic diagram <sup>(1)</sup>:  
HTi<sup>70</sup> GAS HYBRID



(1) Refer to instructions for connection layout.

Advantages for business customers

### Design

- Optimised DHW management with a choice of volume and tank location, and water heated by the heat pump.
- No refrigerant handling required thanks to a simple hydraulic link between the heat pump and the control unit (the full kit includes pump + control unit + hydraulic link with filters and 2 hoses).

### Performance

- Suitable for phased renovation of poorly insulated homes:
  - Before insulation > boiler used if requirements exceed the capacity of the heat pump on the coldest days.

- After insulation > reduced heat loss increases the heat pump's operational share.

### Comfort & durability

- Its flexibility allows it to cover several circuits.

### Savings

- Operates with or without back-up (gas, electricity, etc.) depending on the installation configuration.

Benefits for your customers

### Design

- The Hybrid Gas control unit covers all heating and remote DHW requirements.
- Independent circuits allow for an extended service life.

### Usage

- Ideal for extreme temperatures or isolated locations in the countryside or mountains.
- Can be used to replace an old boiler and does not require the replacement of existing high-temperature radiators.

### Performance

- Guaranteed thermal comfort all winter long thanks to the adjustable gas condensing auxiliary heating system.
- Thermodynamic running down to a -20 °C outside air temperature. The system selects the most efficient energy based on external conditions.

### Comfort & reliability

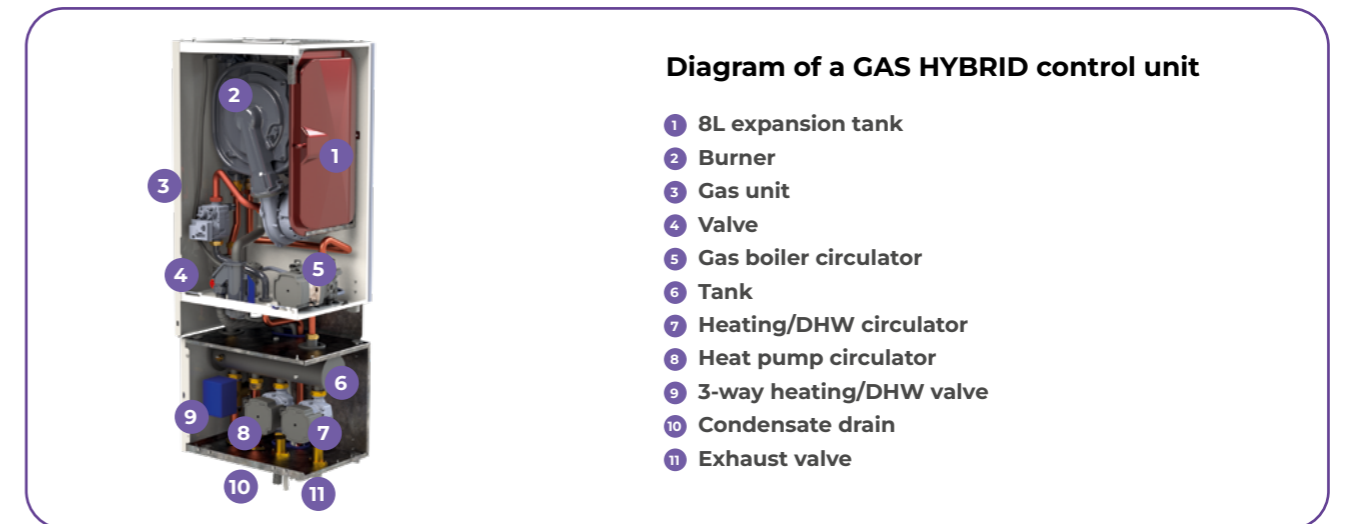
- Smart remote management (optional).
- Runs in Peak/Off-Peak Time mode and is compatible with the EJP programme (France only).
- The systems are independent: Heat pump only, hybrid heat pump/gas boiler, boiler only
- Their meticulous design ensures very low noise emission (see diagram p.5).

### Environment

- The R290 used in our heat pumps is a non-fluorinated gas low environmental impact (GWP=3).

### Savings

- Eligible for financial assistance/EDF grant.
- The high performance coefficient allows a reduction in meter subscription costs. No need to switch to three-phase and increase your electricity bill for high power requirements. Minimum gas contract.



### HTi<sup>70</sup> 6, 8, 11, and 14kW heat pump systems

Product name	Energy class & SEER 35° C/55 °C	Heating capacity Maximum at -7° C/65 °C	Item
HTi <sup>70</sup> 6kW single-phase Gas Hybrid	A <sup>+++</sup> /A <sup>++</sup> 190%/137%	5,5	155008
HTi <sup>70</sup> 8kW single-phase Gas Hybrid	A <sup>+++</sup> /A <sup>+++</sup> 192%/155%	6,85	155018
HTi <sup>70</sup> 8kW three-phase Gas Hybrid	A <sup>+++</sup> /A <sup>+++</sup> 191%/153%	6,85	155058
HTi <sup>70</sup> 11kW single-phase Gas Hybrid	A <sup>+++</sup> /A <sup>++</sup> 186%/144%	11	155028
HTi <sup>70</sup> 11kW three-phase Gas Hybrid	A <sup>+++</sup> /A <sup>++</sup> 186%/144%	11	155068
HTi <sup>70</sup> 14kW single-phase Gas Hybrid	A <sup>+++</sup> /A <sup>++</sup> 177%/144%	13	155038
HTi <sup>70</sup> 14kW three-phase Gas Hybrid	A <sup>+++</sup> /A <sup>++</sup> 177%/144%	13	155078

NB: sets are supplied with an exterior sensor as standard. This allows an extra 2% on your SEER.

# HEAT PUMP AND CONTROL UNIT ACCESSORIES

## EXTERNAL UNIT



**Ref. 753102**  
2 core armoured cable, 20 m



**Ref. 754208**  
40 m DN 30 coil hose for HTi70 11/14kW and HRC70



**Ref. 754209**  
4 DN25 tube connectors for HTi70 6/8kW



**Ref. 754600**  
12 cm adjustable booster for HTi70



**Ref. 754103**  
2 core armoured cable, 50 m



**Ref. 741003**  
Adjustable tripod for Onix 40



**Ref. 711000**  
High-capacity 1 1/4" filtration kit for HTi70 6/8kW



**Ref. 751004**  
External defrosting cable for HRC70



**Ref. 754210**  
4 DN30 tube connectors for HTi70 11/14 kW

## INTERIOR UNIT



**Ref. 710014**  
KD 10 - Shutoff kit



**Ref. 710111**  
65 °C manual reset underfloor heating temperature limiter



**Ref. 710018**  
1" F/F check valve



**Ref. 754602**  
Cooling kit for Orium

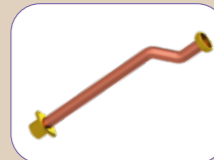


**Ref. 754300**  
Adjustable humidistat for cooling mode

## ADDITIONAL CIRCUITS



**Ref. 710111**  
65 °C manual reset underfloor heating temperature limiter



**Ref. 754211**  
2nd Premium+ circuit kit by Thorix IC



**Ref. 753105**  
2nd circuit identical temperature kit for Premium+



**Ref. 755823**  
Auto 25-125-130 hydraulic line



**Ref. 411002**  
Thorix evolution IC - 1 mixed circuit + exterior sensor (integrated underfloor flow safety aquastat)

**Ref. 411003**  
Thorix EVOLUTION IC - 1 direct circuit + mixed circuit + exterior sensor (integrated underfloor flow safety aquastat)

## CIRCUIT CONTROL



**Ref. 751009**  
Room sensor with display



**Ref. 710029**  
DHW/pool/cascade sensor



**Ref. 710158**  
3-way valve flow sensor for ZI



**Ref. 770001**  
TH NCR/2 radio: non-chrono-proportional wireless room thermostat



**Ref. 752202**  
Aquastat

## CONNECTIVITY



**Ref. 730078**  
Modbus kit - Thermodynamic water heater/Heat pump



**Ref. 770002**  
Thermo-Net Gateway

## HYDRAULIC CIRCUITS



**Ref. 710124**  
3/4" filter valve



**Ref. 710125**  
1" filter valve



**Ref. 710132**  
1 1/4" filter valve

## Heat pump accessories

Product name	HTi	Item
External defrosting cable for HTi70.	✓	754101
2 core armoured cable, 20 m long, heat pump/control unit (replaces 10 m cable supplied as standard)	✓	753102
2 core armoured cable, 50 m long, heat pump/control unit (replaces 10 m cable supplied as standard)	✓	754103
40 m DN 25 coil hose for HTi70 6/8kW	HTi70 6/8kW	754207
40 m DN30 coil hose for HTi70 11/14kW	HTi70 11/14 kW	754208
4 DN25 tube connectors for HTi70 6/8kW	HTi70 6/8kW	754209
4 DN30 tube connectors for HTi70 11/14 kW	HTi70 11/14 kW	754210
High-capacity 1 1/4" filtration kit for HTi70 6/8kW	HTi70 6/8kW	711000
12 cm adjustable booster for HTi70	✓	754600
Adjustable tripod for Onix 40	HTi70 11/14 kW	741003

## Control unit accessories

Product name	ORIUM	PREMIUM+	DS170 D	GAS HYBRID	Item
Room sensor with display <a href="#">additional 2% on SEER</a>	✓	✓	✓	✓	751009
TH RNC/2 radio: non-chrono-proportional wireless room thermostat* <a href="#">extra 2% on SEER</a>	✓	✓	✓	✓	770001
DHW/pool/cascade sensor	✓	✓	Integrated	✓	710029
Aquastat	-	-	-	-	752202
Domestic hot water tanks	✓	✓	-	✓	
65 °C manual reset underfloor heating temperature limiter with beam	✓	✓	✓	✓	710111
Modbus kit - Thermodynamic water heater/Heat pump	✓	✓	✓	✓	730078
2nd circuit identical temperature kit for Premium+.	-	✓	-	-	753105
1 1/4" high-capacity filtration kit	✓	✓	✓	✓	711000
1" F/F check valve(required for domestic boiler back-up only)	-	✓	-	-	710118
Thorix EVOLUTION IC - 1 mixed circuit + exterior sensor 2nd circuit at a lower temperature	✓	✓	✓	✓	411002
Thorix EVOLUTION - 2C - 1 direct circuit + 1 mixed circuit + exterior sensor - 2nd circuit at a lower temperature	✓	✓	✓	✓	411003
KD 10 - Shutoff kit	✓	✓	✓	✓	710014
Flue connection pack	-	-	-	✓	(not included)

\* Compatible with all non-chrono-proportional connectable thermostats on the market.

## Hydraulic accessories

Product name	Item
3/4" filter valve	710124
1" filter valve	710125
1 1/4" filter valve	710132

# HEAT PUMP AND CONTROL UNIT FEATURES



## HEAT PUMP features

Heat pump		HTI <sup>70</sup> 6 single-phase	HTI <sup>70</sup> 8 single-phase	HTI <sup>70</sup> 8 three-phase	HTI <sup>70</sup> 11 single-phase	HTI <sup>70</sup> 11 three-phase	HTI <sup>70</sup> 14 single-phase	HTI <sup>70</sup> 14 three-phase
Seasonal performance coefficient energy class 35 °C/55 °C		A+++/A++	A+++/A+++	A+++/A+++	A+++/A++	A+++/A++	A+++/A++	A+++/A++
Seasonal performance coefficient 35 °C/55 °C		4,75 / 3,41	4,83 / 3,93	4,83 / 3,83	4,72 / 3,67	4,71 / 3,67	4,44 / 3,64	4,44 / 3,64
Seasonal energy efficiency 35 °C/55 °C - SEER (η <sub>s</sub> )	%	187%/133%	190%/154%	190%/154%	186%/144%	185%/144%	175%/143%	175%/143%
Maximum heat output at -7 °C/35 °C	kW	6	8	8	11	11	14	14
Maximum heat output at -7 °C/65 °C	kW	5,5	6,85	6,85	11	11	13	13
Nominal heat output at +7 °C/35 °C (EN14511)	kW	4,06	5,72	5,89	8,95	8,95	10,76	10,76
Performance coefficient at +7 °C/35 °C (EN14511)	-	4,59	4,85	4,71	4,85	4,85	4,64	4,64
Nominal sound pressure level (5m, directionality 4)	dB(A)	36,8	37,5	37,5	36,3	36,3	39,4	39,4
Power level (ERP +7 °C/55 °C)	dB(A)	55,8	57,6	57,6	51,2	51,2	58,4	58,4
Outside air range	°C	-20 to +40	-20 to +40	-20 to +40	-20 to +40	-20 to +40	-20 to +40	-20 to +40
Power supply	V	230 single-phase	230 single-phase	400 three-phase	230 single-phase	400 three-phase	230 single-phase	400 three-phase
Protective circuit breaker	A	16 single-phase	16 single-phase	10 four-pole	32 single-phase	16 four-pole	32 single-phase	16 four-pole
Circuit breaker curve	-	D	D	D	D	D	D	D
Maximum electrical power	kVA	3,6	3,6	3,6	7	7	7	7
Minimum cross-section of power cable	mm <sup>2</sup>	3G 2.5	3G 2.5	5G 2.5	3G 6	5G 2.5	3G 6	5G 2.5
Dimensions (H x W x D)	mm	820 x 1035 x 450	1070 x 1035 x 450	1070 x 1035 x 450	1028 x 1235 x 490	1028 x 1235 x 490	1028 x 1235 x 490	1028 x 1235 x 490
Empty weight	kg	81	94	108	136	146	142	150
Nominal water flow rate	L/h	1000	1350	1350	1550	1550	2000	2000
Refrigerant	kg	0,42	0,6	0,6	0,9	0,9	0,95	0,95
Hydraulic connection	mm	26/34 male	26/34 male	26/34 male	26/34 male	26/34 male	26/34 male	26/34 male

## ORIU features



Control unit		ORIU
Minimum cross-section of power cable	mm <sup>2</sup>	3G 6 (single-phase) / 5G 2.5 (three-phase)
Power protection circuit breaker	A	32 (single-phase) / 16 (four-pole)
Circuit breaker curve	-	C
Power supply	V	230 (single-phase) / 400 (three-phase)
Multi-purpose cylinder	L	-
Unit dimensions (H x W x D) / Unit empty weight	mm / kg	496 x 400 x 305 / 18
Hydraulic connections	mm	26/34 male
Boiler connection	-	✗
Electric connection (standard)	kW	0/2/4/6kW
Circuit separation	-	✓

**Part number 754602**  
Cooling kit\*:  
- Back panel  
- Upward output  
- Condensate recovery tank  
- Exhaust pipe



\* Optional cooling mode

## PREMIUM+ features



Control unit		PREMIUM+
Minimum cross-section of power cable	mm <sup>2</sup>	3G 6 (single-phase) / 5G 2.5 (three-phase)
Power protection circuit breaker	A	32 (single-phase) / 16 (four-pole)
Circuit breaker curve	-	C
Power supply	V	230 (single-phase) / 400 (three-phase)
Multi-purpose cylinder	L	38 (integrated in the control unit)
Unit dimensions (H x W x D) / Unit empty weight	mm / kg	789 x 590 x 420 / 47
Hydraulic connections	mm	26/34 male
Boiler connection	-	✓
Electric connection (standard)	kW	0/2/4/6kW (single-phase or three-phase)
Circuit separation	-	✓

## DSI70 D features



Control unit		DSI70 D
Minimum cross-section of power cable	mm <sup>2</sup>	3G 6 (single-phase) / 5G 2.5 (three-phase)
Power protection circuit breaker	A	32 (single-phase) / 16 (four-pole)
Circuit breaker curve	-	C
Power supply	V	230 (single-phase) / 400 (three-phase)
Multi-purpose cylinder	L	40 (only applies to HTI <sup>70</sup> 11 and 14)
Unit dimensions (H x W x D) / Unit empty weight	mm / kg	1725 x 571 x 542 / 80
Hydraulic connections	mm	20/27 male
Boiler connection	-	✗
Electric connection (standard)	kW	0/2/4/6kW (single-phase or three-phase)
Circuit separation	-	✓

## GAS HYBRID features



Control unit		GAS HYBRID
Minimum cross-section of unit power cable	mm <sup>2</sup>	3G 1.5 (single-phase)
Minimum cross-section of boiler power cable	mm <sup>2</sup>	3G 1.5 (single-phase)
Unit power protection circuit breaker	A	2 (single-phase)
Unit circuit breaker curve	-	C
Boiler power protection circuit breaker	A	10 (single-phase)
Boiler circuit breaker curve	-	C
Power supply	V	230 (single-phase)
Interior unit dimensions (H x W x D)	mm	1063 x 400 x 333
Empty weight of unit/boiler	kg	17,2 / 32,5
Hydraulic connections	mm	26/34 male
Boiler connection	-	✓
Circuit separation	-	✓
Back-up	-	Natural gas/Propane/Biomethane
Gas connection	-	3/4" male
Flue connection	mm	60 / 100

# OUR BUSINESS SERVICES



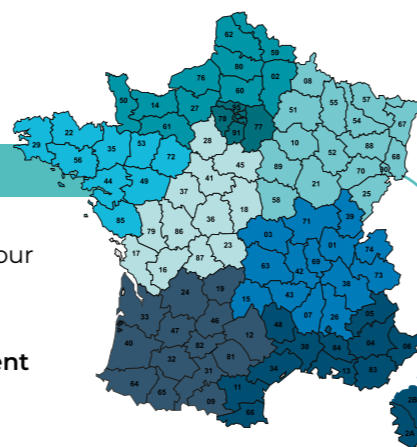
## Business assistance <sup>(1)</sup>

Our sales teams are on hand throughout France to help you manage your projects with total peace of mind.

For further assistance with your projects, please contact the sales administration department

**09 78 45 10 26**  
(Price of a local call)

[adv@intuis.fr](mailto:adv@intuis.fr)



## Export

For all requests outside mainland France, please **contact the export sales department at the following address:**

[export@groupe-intuis.fr](mailto:export@groupe-intuis.fr)



## AFTER-SALES SERVICE <sup>(1)</sup>

For all your requests for information or technical assistance, a team of specially trained professionals based at our Feuquières-en-Vimeu (Fr) site is available to assist you by telephone and answer any questions you may have during your operations.

Contact them on  
**09 78 45 10 26**



## Guarantees

	CASE 1	CASE 2
<b>Person responsible for sending supporting documents</b>		
<b>Documents to be sent</b>	Fitter	Fitter
Warranty certificate	x	x
Commissioning form		x
Photos of the system		x
USB operating file <sup>(2)</sup>		x
<b>Parts concerned</b>	Warranty period	
DHW tank <sup>(3)</sup>	3 years	3 years
Compressor	2 years	<b>5 years</b>
Electrical equipment, regulation	2 years	2 years
Labour	-	-

# SMART PRODUCTS/THERMOSTATS DETACHED HOUSE

## Radio-controlled room temperature

### TH NCR: Non-chrono-proportional thermostat:

- Regulates the temperature of a heated area, remotely in the room.
- Radio communication with a receiver, wireless installation.
- Programmable hourly and weekly temperature settings.

### Thermo-Net Gateway:

- Communication gateway for remote temperature control via a Wi-Fi router.
- Manage your smart home equipment with your smartphone, tablet, or by voice control.
- X3D and ZigBee 3.0 communication protocol for multiple compatibility.
- Download the free Tydom app.
- Also allows you to manage other actions in the home (lights, locks, smart plugs, etc.).

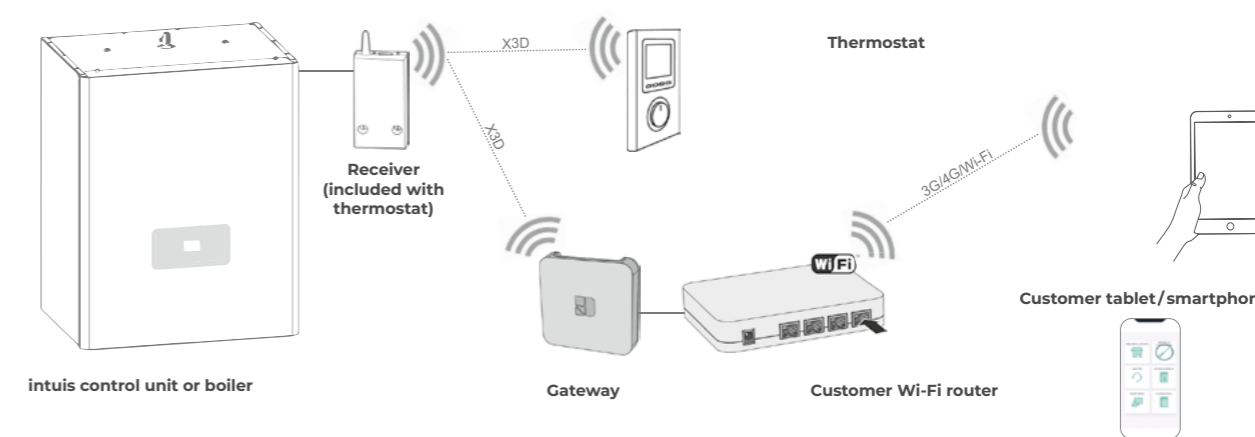


**Ref. 770001**  
Thermostat (supplied with receiver)



**Ref. 770002**  
Gateway

## Solutions diagram

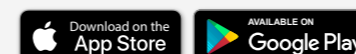


## Thermostat accessories

Product name	Ref.
TH NCR/2 radio - Wireless non-chrono-proportional room thermostat & receiver (1 per circuit)	770001
Thermo-Net - Communication gateway (only compatible with part number 770001)	770002

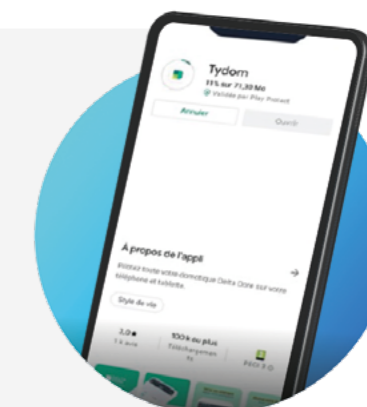
## download the Tydom app for free

Available on Google play and the App Store



## System setup:

- Professional installation
- End-user activation



(1) For mainland France only (2) Optional (3) When combined with DS170 D driver.



intuis

MORE COMFORT, LESS ENERGY.

**Headquarters**

28 rue de Verdun  
92150 Suresnes

**intuis thermodynamique**

27 rue de la République  
80210 Feuquières-en-Vimeu

**Customer services**

+33 (0)9 78 45 10 26  
service-client@intuis.fr

**Export**

export@groupe-intuis.fr

Auer (intuis) S.A.S with capital of €6,408,656 - Trade Register: PARIS 334 981 958 - NAF code: 2957Z - VAT N°: FR 84 334 981 958 - Public rates ex VAT. Information subject to typographical errors. Due to technical developments, intuis reserves the right to modify its equipment without prior notice. Illustrations and photos are non-contractual Edition - 02/2024 - HRC® February 2024 brochure - Printed by Grafik plus - 14 rue Montgolfer, 93100 Rosny-sous-Bois - Do not litter

